



One step ahead of the plow: Using cropland conversion risk to guide Sprague's Pipit conservation in the northern Great Plains



Marisa K. Lipsey^{a,*}, Kevin E. Doherty^b, David E. Naugle^a, Sean Fields^c, Jeffrey S. Evans^{d,e}, Stephen K. Davis^f, Nicola Koper^g

^a Wildlife Biology Program, University of Montana, 32 Campus Drive, Missoula, MT 59812 USA

^b United States Fish and Wildlife Service, 134 Union Blvd., Lakewood, CO 80228, USA

^c United States Fish and Wildlife Service, Region 6 HAPET Office, 922 Bootlegger Trail, Great Falls, MT 59404, USA

^d The Nature Conservancy, 117 E Mountain Ave Ste 201, Fort Collins, CO 80524, USA

^e Department of Zoology and Physiology, University of Wyoming, 1000 E. University Ave, Laramie, WY 82071, USA

^f Environment Canada — Canadian Wildlife Service, 300, 2365 Albert Street, Regina, SK S4P 4 K1, Canada

^g Natural Resources Institute, University of Manitoba, 70 Dysart Rd. Winnipeg, MB R3T 2 M6, Canada

ARTICLE INFO

Article history:

Received 2 February 2015

Received in revised form 18 August 2015

Accepted 19 August 2015

Available online 5 September 2015

Keywords:

Agricultural conversion

Conservation planning

Cropland

Grassland

Private lands

Sprague's Pipit

ABSTRACT

Rapid expansion of cropland threatens grassland ecosystems across western North America and broad-scale planning can be a catalyst motivating individuals and agencies to accelerate conservation. Sprague's Pipit (*Anthus spragueii*) is an imperiled grassland songbird whose population has been declining rapidly in recent decades. Here, we present a strategic framework for conservation of pipits and their habitat in the northern Great Plains. We modeled pipit distribution across its million-km² breeding range in Canada and the U.S. We describe factors shaping distribution, delineate population cores and assess vulnerability to future grassland losses. Pipits selected landscapes with a high proportion of continuous grassland within a relatively cool, moist climate. Sixty percent of the global breeding population occurred in Canada and 63% of the U.S. population occurred in Montana. Populations were highly clumped, with 75% of birds within 30% of their range. Approximately 20% of the population occurred on protected lands and over half used lands that were unlikely to be cultivated given current technologies. A quarter of pipits relied on remaining arable grasslands and potential population losses varied from 2–27% across scenarios. Most of the population (70%) was dependent on private lands, emphasizing the importance of voluntary approaches that incentivize good stewardship. Our maps depicting core populations and tillage risk enable partners to target conservation in landscapes where pipits will benefit most.

Published by Elsevier Ltd. This is an open access article under the CC BY license (<http://creativecommons.org/licenses/by/4.0/>).

1. Introduction

Grasslands are among the most imperiled ecosystems worldwide (Hoekstra et al., 2004) because their soils provide some of the most productive farmland on earth. As rising global food demand surpasses improvements in yields on existing cropland, additional grassland conversion will be required to feed a projected 11 billion people by 2050 (Foley et al., 2011; Ray et al., 2013). Rising commodity prices exacerbated by demand for biofuels threatens to further expand cropland agriculture (Fargione et al., 2009; Wright and Wimberly, 2013). In temperate North America, historic grassland losses total approximately 70%, including complete conversion of the most productive areas where nothing but remnant tracts persist (Samson et al., 2004). In the northern Great Plains

where most grassland remains, agricultural conversion is happening five times faster than grasslands can be protected (Doherty et al., 2013; Walker et al., 2013).

A steep and consistent decline in songbird populations reflects eroding ecosystem integrity in North American grasslands (Brennan and Kuvlesky, 2005; Sauer et al., 2014). Of high concern is Sprague's Pipit (*Anthus spragueii*; herein "pipit"), a grassland obligate species that breeds in the native mixed prairie of Saskatchewan, Alberta, Montana, and the Dakotas (Davis et al., 2014). The pipit that has been declining >3% annually across North America since 1966 (Sauer et al., 2014), is listed as globally vulnerable by the International Union for Conservation of Nature (IUCN, 2014), is federally threatened in Canada (Environment Canada, 2012) and is being considered for federal protection under the U.S. Endangered Species Act (ESA, 1973; USFWS, 2010). The ESA status assessment focuses attention on pipits and underscores the urgency for conservation of northern grasslands.

Broad-scale planning enables systematic targeting of scarce conservation resources (Bottrill et al., 2008), and sensitive species provide a useful lens for delineating landscapes of high conservation value and

* Corresponding author.

E-mail addresses: marisa.lipsey@umontana.edu (M.K. Lipsey), Kevin_Doherty@fws.gov (K.E. Doherty), david.naugle@umontana.edu (D.E. Naugle), Sean_Fields@fws.gov (S. Fields), jeffrey_evans@tnc.org (J.S. Evans), stephen.davis@ec.gc.ca (S.K. Davis), Nicola.Koper@umanitoba.ca (N. Koper).

identifying impacts of human activity (Sanderson et al., 2002). Spatially explicit tools enable practitioners to target implementation where populations will benefit most (Margules and Pressey, 2000). We present a three-part analytical framework for strategic conservation of pipits in North America. First, we depict a range-wide distribution model by integrating survey efforts across a million-km² area of Canada and the United States. Using our model, we describe factors shaping pipits' continental distribution and delineate core areas of high bird abundance. Second, we assess vulnerability to future habitat loss using soil capability for agriculture as an index of conversion risk. For the U.S. portion of the range, we employ a quantitative risk model to develop future scenarios of cropland expansion and assess potential impacts to populations. Finally, we explore the relationship between land tenure and population distribution to guide appropriate conservation approaches.

2. Methods

2.1. Study area

Our study area includes the intersection of the Breeding Bird Survey range for pipits (Sauer et al., 2014) and the Plains and Prairie Pothole Landscape Conservation Cooperative (PPPLCC; Millard et al., 2012), a consortium of public and private conservation partners (Fig. A1). The region covers portions of Alberta, Saskatchewan, Montana and the Dakotas. This area is made up of diverse mixed grass prairie with level to rolling terrain. It encompasses interspersed badlands and sagebrush steppe in the west and pothole wetlands and prairie parklands in the east and north. It includes portions of Great Plains–Palouse Dry Steppe (331), Great Plains Steppe (332) and Prairie Parkland (251) provinces as described by Bailey (1995).

2.2. Species distribution model

2.2.1. Bird survey data

Range-wide perspectives are required for conservation of migratory songbirds. Data limitations and inconsistent collection methods have hindered efforts to model bird distributions across broad scales. To describe the distribution of pipits in their breeding range, we combined data from 76,623 point counts (2007–2012; Table A1) into one integrated analysis. Integration allowed us to achieve spatial coverage that made a continental perspective possible. To assess the influence of point count distance and duration on pipit detectability, we conducted a sensitivity analysis in the heart of the range (northeast Montana). The test dataset, collected in 2012–2013, contained known distance and time intervals for evaluation (author ML, unpublished data). We truncated data by 1-min time interval (0–1, 0–2, 0–3, etc.) and distance interval estimated to the nearest 10-m. We then used linear models to estimate the effect of time and distance on observed detection probability and abundance. Detection probability remained relatively insensitive to count duration (1% increase per minute) and distance (4% per 100-m). Bird abundance was more strongly affected (3 and 8% respectively) so we limited subsequent modeling to presence/absence data.

We removed repeated and overlapping records, keeping the most recent surveys within 200-m of one another based on average point-count radius. Surveys were not targeted for pipits and data were heavily skewed towards absence, so we stratified records to ensure appropriate class balance with 40% occurrence. Because survey locations were highly clumped in some regions, we thinned the dataset to 10,000 records (approximately 30%) using a random sampling algorithm weighted by the inverse proportional kernel density estimate of sampling intensity using the R package *spatialEco* (Evans, 2015). Thinning directly addresses sample independence by modeling the spatial process of the observed data and effectively smoothing the sample distribution to a more uniform spatial process. However, some portions of the

study region, including the Dakotas and Saskatchewan, had lower data availability and contributed proportionally fewer records even after thinning (Fig. A1).

2.2.2. Environmental predictors

Climate has a strong relationship with bird habitat in North America and long-term averages reflect envelopes that shape geographic ranges (Jiménez-Valverde et al., 2011; Thomas, 2010). We obtained long-term averages for North America from USDA (2012). Developed from monthly climatic surfaces spanning 1961–1990, this dataset uses thin-plate splines to depict continuous variables over a stable climatic period that likely reflects establishment patterns for plant communities (McKenney et al., 2001; Rehfeldt, 2006). We included five long-term averages in model selection: mean annual precipitation (mm), mean annual temperature (C°/10), total growing season precipitation (mm), summer precipitation balance and average frost free period in days. Climate variables were highly correlated, so we chose those most relevant to herbaceous vegetation growth and that had correlations ≤ 0.8 .

Because grassland birds are sensitive to vegetation structure (Fisher and Davis, 2010), we included three shorter-term measures of vegetation growth and moisture, including Gross Primary Productivity (GPP), maximum annual snowfall, and the Palmer Drought Severity Index (PDSI). We averaged short-term measures across 2006–2010, including the year preceding bird surveys because residual vegetation is an important component of grassland bird habitat (Ahlering et al., 2009). Comparable data for 2011–2012 were not available at the time of analysis. GPP provides an index of the amount of vegetation growth and is derived from Moderate Resolution Imaging Spectrometer satellite imagery at 8-day intervals (Reeves et al., 2006). We represented GPP as the maximum measurement during April–July using values obtained from NASA (2012). Maximum snow depth for winter between October and April was obtained from Snow Data Assimilation System (National Operational Hydrologic Remote Sensing Center, 2004). For PDSI we used global 2.5° gridded monthly data for May self-calibrated with the Penman–Monteith potential evapotranspiration formulation, 1900–2010 (Dai and NCAR, 2014).

We included attributes for land cover because pipits require relatively large and intact grassland on their breeding grounds (Davis et al., 2006; Sliwinski and Koper, 2012). We used four variables that describe patterns in land-cover: proportion of cropland, forest, grassland and grassland aggregation index. We derived 400-m resolution binary layers of crop, forest and grassland from 30-m products created by Agriculture Agri-Food Canada in 2010 (2015) and level II of the United States Geological Survey 2011 National Land Cover Dataset (Homer et al., 2015). Land use classes had overall accuracies of 78–79% in the U.S. (Wickham et al., 2010, 2013) and about 93% in Canada (Agriculture and Agri-Food Canada, 2015). For each 400-m cell, we estimated the proportion land cover and aggregation in the surrounding neighborhood using a moving window average. We used the program FRAGSTATS (McGarigal et al., 2012) to estimate grassland aggregation index, calculated as the proportion of within-class adjacencies among neighboring pixels and indicating degree of fragmentation. We tested a range of window sizes (0.026 to 100-km²) with binomial regression and used Akaike's Information Criterion (AIC) to determine the most predictive scale (Fig. A2). Grassland cover was most predictive 1-km² around surveys ($\Delta AIC = 3-400$) and aggregation index was most predictive at 10.4-km² ($\Delta AIC = 3-224$). Grassland cover was closely related to aggregation index ($r = 0.88$) but correlation coefficients among other land cover variables were moderate (-0.78 to -0.13).

2.2.3. Statistical methods

We specified a binomial model with a probabilistic outcome using the nonparametric model Random Forest (Breiman, 2001) in program R (Liaw and Wiener, 2002; R Development Core Team, 2013). Random Forest is a bootstrapped Classification and Regression Tree (CART) approach that is based on the principle of weak learning (Hastie et al., 2008), where a set of weak subsample models converge on a stable

global model. This method has been shown to provide stable estimates while being robust to many of the issues associated with spatial data (e.g., autocorrelation, nonstationarity). It fits complex, nonlinear relationships and accounts for high dimensional interactions (Cutler et al., 2007; Evans et al., 2011). We assessed competing models by comparing model importance, calculated as smallest out-of-bag (OOB) error, smallest maximum within-class error and fewest parameters (Murphy et al., 2010) using package *rfUtilities* (Evans and Murphy, 2014). Parsimony in Random Forests reduces noise, produces a more interpretable model and results in better model fit (Evans et al., 2011; Murphy et al., 2010). To assess model fit, we calculated OOB error, root mean square error (RMSE; Willmott, 1981) and the calculated area under the receiver operating curve (AUC; Metz, 1978) in two ways: first, with data used in model fitting, and second, with data withheld from fitting after thinning (see Section 2.2.1). To assess model performance, we conducted independent cross-validation using 1000 replicated predictions with 10% withheld data from each replicate. We quantified error as the cumulative error rate across bootstrap replicates.

Imperfect detections (false absences) in bird survey data can be a significant source of error in models of distribution. Available estimates of detection probability for pipits range between 0.70–0.82 (S. Davis [0.70] and M. Lipsey [0.82], unpublished data). We assessed the effect of false absences on model fit by conducting a sensitivity analysis in the package *rfUtilities* by randomly changing a proportion ($p = 0.05$) of presences to absences and running a series of perturbed models. This test also reflects model sensitivity to lack of independence in predictors. We observed a small standard deviation ($\delta = 0.0005$), across $n = 999$ simulations, indicating model stability. This can be partially attributed to the ability of Random Forests to predict through noise and is an advantage of weak learners (Breiman, 2001).

2.3. Population core areas

To estimate the regional distribution of populations, we first resampled the model prediction raster from the arbitrary resolution of environmental layers (400×400 m or 16 ha) to units that approximated territory size for male pipits (160×160 m or about 2.6 ha; Fisher and Davis, 2011) using bilinear interpolation in ArcGIS (ESRI, 2010). We summed the probability of occurrence across all pixels in the study region to generate an index of total population. We placed each grid cell prediction in the context of the study area by dividing the individual pixel probability by the total index. Starting with the highest-value pixels, we cumulatively summed the probabilities until a given threshold was met. We set 25, 50 and 75% thresholds to delineate cores as the smallest possible areas containing the highest concentrations of predicted pipits. We estimated proportion of the population within multiple political and ownership boundaries by dividing the sum of occurrence probabilities in each class by our total population index.

2.4. Continental cropland risk

To estimate future conversion risk of grassland to cropland, we used existing soil databases to overlay soil capability for agriculture on the pipit distribution. Soil capability classes are ranked 1 to 8, with 1 being the most suitable for crops and 8 the least. We accounted for slight differences in soil classifications between the two countries by combining categories 1–2 (most arable), 3–4 (some limitations) and 5–8 (least arable). Conversion rates tracked soil capability, with the most arable land (classes 1–2) largely already converted (70%). By comparison, only 47 and 5% of the moderate (classes 3–4) and least arable soils (5–8), respectively, have already been converted. Using the species distribution model probability surface, we calculated the simple proportion of the predicted population on untilled land in each soil class. We also calculated the proportion of land and population that are legally protected from agricultural conversion within each soil class. We obtained soil data from the Natural Resources Conservation Service web

soil survey database (NRCS, 2014) in the U.S. and from the *Canada Land Inventory in Canada* (1998).

2.5. U.S. cropland risk scenarios

To identify regions and populations at risk from conversion in the U.S., for which we had more detailed data than we did for Canada, we used a cropland suitability model described in Smith et al. (in preparation). The model provides a probability surface with values from 0–1, representing the relative suitability of each grid cell for conversion to cropland. We used this surface to develop three potential build-out scenarios, a–c. In each scenario, land above a given probability cut-point was assumed to be converted. Pattern and rate of future grassland loss is difficult to predict; therefore, we use scenarios only as reference points for planning. Scenarios do not reflect variation in rates of conversion, nor do they refer to a given time horizon. They represent the spectrum of plausible absolute losses in grassland area due to cropland expansion based upon observed rates of loss (Fig. A3; Doherty et al., 2013; GAO, 2007).

Scenario (a) represents minimal, or background conversion, scenario (b) represents a constrained growth scenario for cropland and scenario (c) represents unconstrained cropland growth. We reclassified the probability surface raster to produce predicted conversion layers. Probability cut-points that defined scenarios were selected as (a) 0.98, (b) 0.7 and (c) 0.3 (Table 2) after visual inspection of the area accumulation curve derived from the tillage model (Fig. A3). For each scenario, we removed pixels of predicted new cropland from the original land cover layer of grassland. All federal land and state lands were considered protected from cropland conversion except state school trust lands. Tribal lands included in the Bureau of Indian Affairs (BIA) databases were treated as private, thus not protected from conversion. Existing cropland was also excluded. We converted altered grassland layers to proportion and aggregation variables and substituted them into the original model to re-predict pipit distribution under each scenario.

2.6. Ownership

To estimate the composition of land tenure and conservation status of the pipit population in the U.S., we used ownership and protection data compiled for Doherty et al. (2013). In Canada, we built an ownership layer by combining boundaries from provincial, federal, and private conservation areas. To quantify areas protected from cropland in Canada, we obtained parcel boundaries of provincial land that were legally protected from cultivation from the Alberta, Saskatchewan, and Manitoba provincial governments and those of federal lands from Environment Canada. We also obtained information on lands that were privately owned and legally protected from cultivation from private conservation agencies (e.g., Nature Conservancy of Canada, Ducks Unlimited Canada). We considered lands with perpetual conservation easements to be protected from conversion but lands under volunteer or management agreement to be available for conversion. For each ownership class, we summed the value of the species distribution model probabilities and divided by the total to produce a proportional estimate of population density by ownership.

3. Results

3.1. Species distribution model

The most supported and parsimonious model of pipit occurrence included nine predictors: proportion of grassland, grassland aggregation index, PDSI, average maximum snowfall, growing season precipitation, summer precipitation balance, average frost-free period, mean annual precipitation and mean annual temperature (Fig. 1). RMSE was 0.06 with a 14.9% OOB error rate. The AUC was 0.99 when predicting data used in model fitting and 0.88 when predicting data that were not

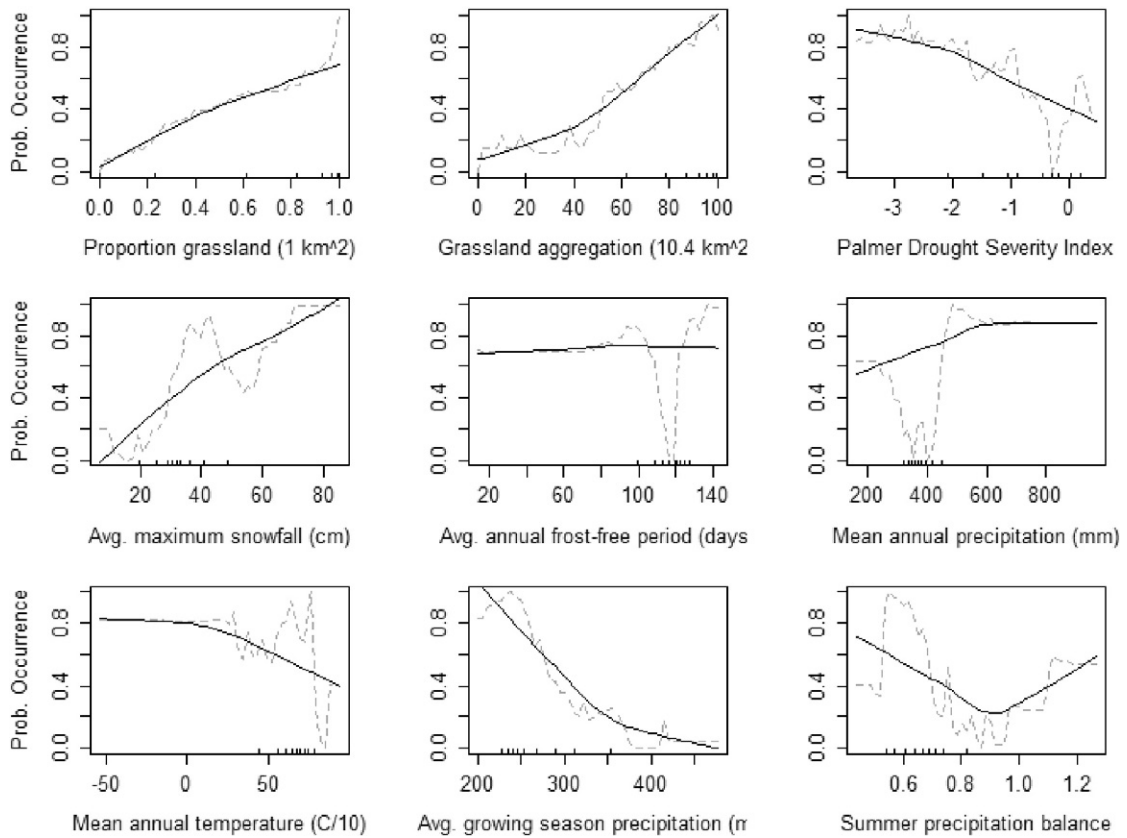


Fig. 1. Partial plots for variables included in the Random Forest model. Gray dotted lines indicate raw data, black lines show data smoothed with a Lowess function. Tick marks above x-axes indicate deciles in the dataset. See Liaw and Wiener (2002) for derivation.

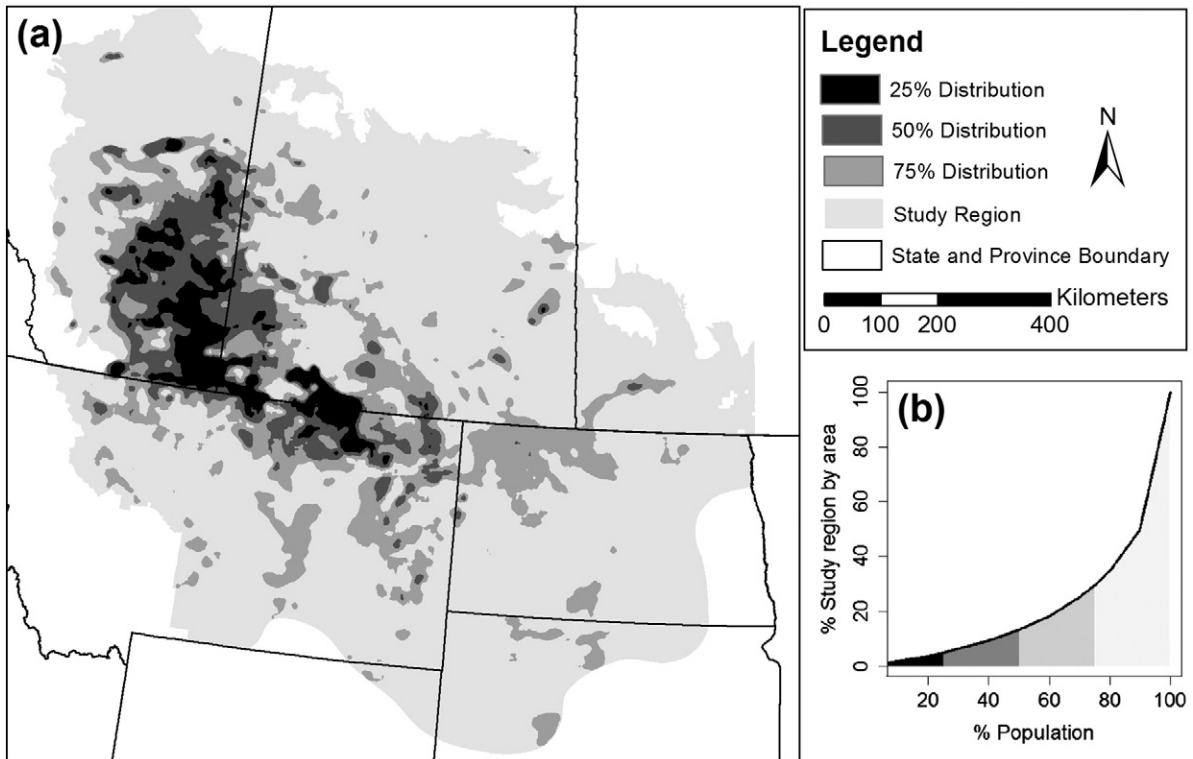


Fig. 2. Predicted population density distribution of Sprague's Pipit across its breeding range (a) and the proportional relationship between area and population density distribution (b). Raw model predictions were smoothed using 16 × 16 km moving window mean.

Table 1

Global and national distribution of Sprague's Pipit across political boundaries. Values derived from the proportion of the summed probability of occurrence layer produced by the Random Forest model in each class. Values shown as percentages.

		Global	National
Countries	Canada	59.3	100
	USA	40.7	100
States/provinces	Alberta	30.9	52.0
	Saskatchewan	26.5	44.7
	Montana	25.7	63.2
	North Dakota	10.6	26.0
	South Dakota	3.6	8.8
	Manitoba	2.0	3.3
	Minnesota	0.5	1.2
Wyoming	0.3	0.8	

used (see Section 2.2.1). The model performed well based on error estimated by cross-validation (15.6%). All assessments indicated good model performance with high predictive accuracy (Fawcett, 2006).

Landscapes with a high proportion of aggregated grassland and with relatively cool, moist climates were most likely to contain pipits. Effects of environmental and climatic predictors on pipit distribution were nonlinear (Fig. 1). Strongest predictors were moisture variables (maximum snowfall, PDSI, growing season precipitation and summer precipitation balance) combined with proportion of grassland 1-km² around survey points.

3.2. Population core areas

Breeding pipits were unevenly distributed across their range and were concentrated in core areas characterized by grassland (Fig. 2a). The relationship between population density and area was steep, with 25% of the population within 5% of the study area and 75% of birds within 30% of the study area (Fig. 2b). Regions of highest pipit density were predicted in southeast Alberta, southwest and south-central Saskatchewan, and northeast Montana. Our model also indicated several smaller core areas in southwest Manitoba and in western portions of the Dakotas. About 60% of the population occurred in Canada, with 40% in the U.S. Alberta and Saskatchewan together contained nearly all (97%) of the Canadian population and 57% of the global population. Montana contained 63% of the U.S. population, with most of the remainder in the Dakotas (Table 1).

3.3. Continental cropland risk

Observed frequency of pipits was three times lower in cropland (13%) than across all other land uses combined (40%). Continentally, we estimate that 21% of breeding pipits occupied grasslands that are legally protected from conversion to cropland. Conversely, a quarter of the population occupied unprotected grasslands at risk of future conversion (soil capability classes 1–4; Fig. 3b). Pipits occupied protected grasslands underlain by arable soils (classes 3–4) more than expected (Fig. 3a; χ^2 test, $p = 0.06$). In contrast, they avoided the most arable, unprotected landscapes (classes 1–2) where widespread conversion has already impacted grasslands (χ^2 test, $p = 0.1$). Protection from conversion was inversely related to soil capability, with grasslands on more arable soils less protected. Protection status was low with 2% of the most arable soils protected (classes 1–2), 8% of classes 3–4 and 23% of classes 5–8 protected.

3.4. U.S. cropland risk scenarios

Within the U.S., potential population declines varied from 2–27% across three conversion scenarios (Fig. 4). Our model indicated a 2% population decline with background growth (Fig. 4; scenario a), a 13% decline with constrained growth (b) and 27% decline with unconstrained growth (c; Table 2). Background rate of conversion in scenario (a) predicted few grassland losses with only the eastern-most fringe of core areas affected. Under the constrained conversion scenario (b), additional core populations were at risk, particularly in smaller habitat blocks along margins of the pipit range. Scenario (b) also predicted habitat loss in the largest core area in the U.S. in northern Montana (Fig. 4). Unconstrained cropland expansion in scenario (c) resulted in habitat losses across most of the eastern portion of the range and the western margins along the Rocky Mountain Front. Intact grasslands were predicted to remain in the south and central portions of the U.S. distribution (Fig. 4).

3.5. Ownership analysis

Land tenure was heavily skewed to private ownership amidst a mosaic of federal, tribal, and state/provincial lands. Our model suggests that 70% of the global breeding population was located on lands under private ownership. We also document that state/provincial, federal and Tribal/First Nation lands each contained considerable portions of the population (Table 3).

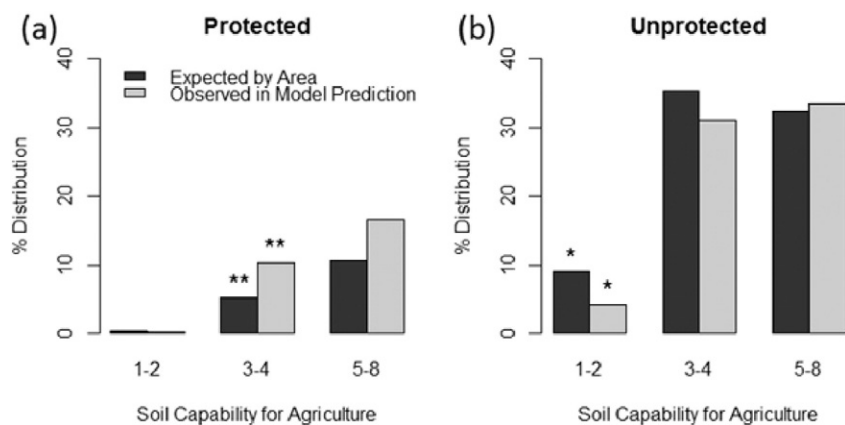


Fig. 3. Sprague's Pipit expected and predicted distribution by soil capability class on lands that are protected (a) and unprotected (b) from future tillage. Soils more suitable for cropland have a lower classification (1 is most arable, 8 is least). Asterisks (*) indicate classes where proportion of modeled population deviates from expected based on area (by χ^2 test, * indicates $P = 0.1$, ** indicates $P = 0.06$).

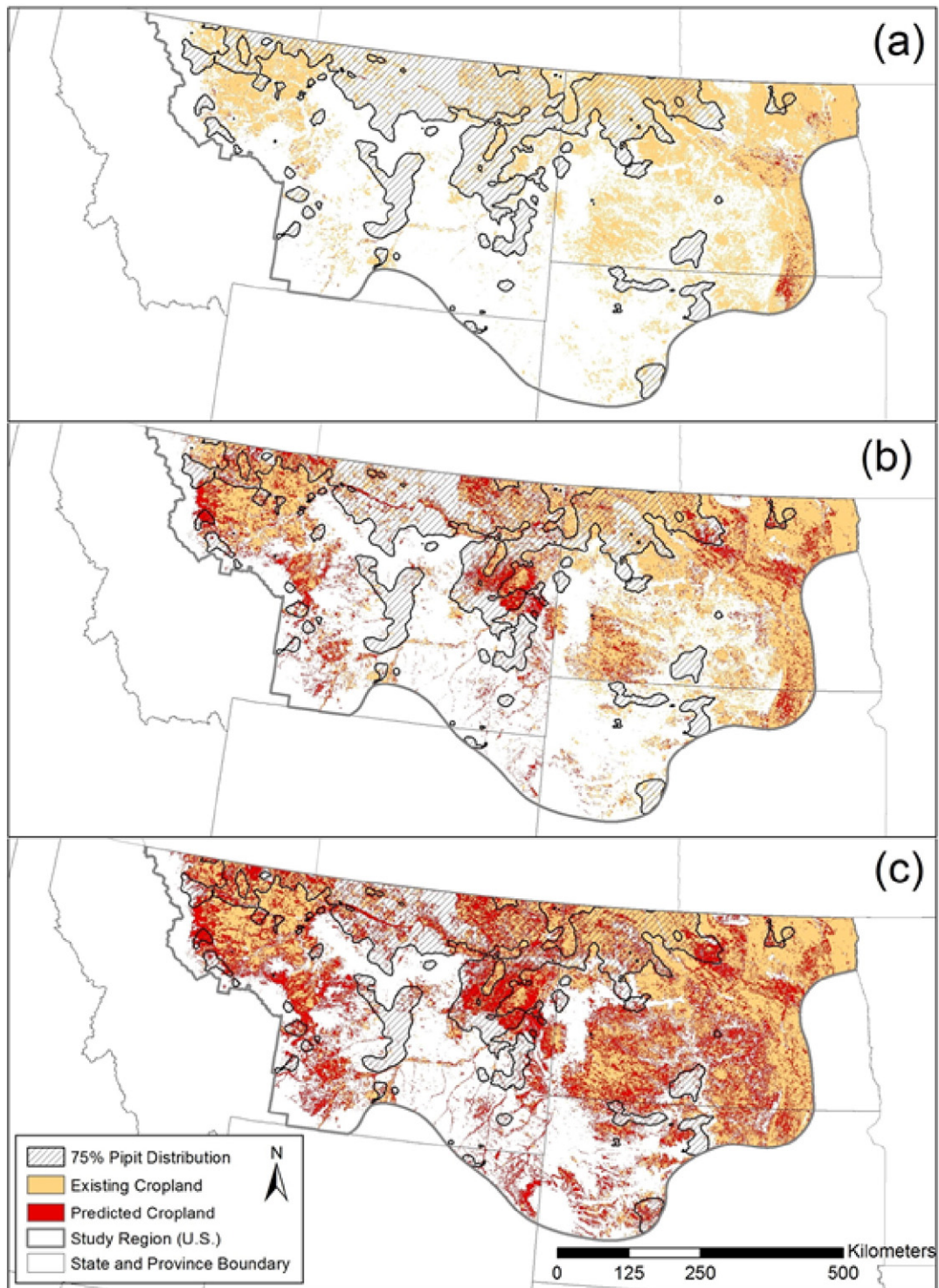


Fig. 4. Predicted cropland expansion under three future build-out scenarios: background (a), constrained (b) and unconstrained (c). Hatched area shows core region containing about 75% of the U.S. Sprague's Pipit population.

4. Discussion

A broad-scale perspective can inform systematic approaches to achieving conservation with limited resources. Anchored within core areas of high abundance, our approach links populations to landscape conservation at a continental scale. In western North America, core areas are being used to guide investments for high-profile and at-risk

species like woodland caribou (Schneider et al., 2010) and greater sage-grouse (Copeland et al., 2013; Doherty et al., 2010; USFWS, 2013). Often, core areas for focal species coincide with important habitat for other species of interest, as recently demonstrated for mule deer and sage-grouse in Wyoming (Copeland et al., 2014). Indeed, predicted core populations of pipits in northeast Montana and southern Saskatchewan overlapped qualitatively with important migratory

Table 2

Cropland build-out scenarios used in this analysis and resulting predicted loss of the U.S. population of Sprague's Pipit.

Scenario	Risk cutoff	New crop Ha (millions)	New crop Ac (millions)	Pop. loss
a Background loss	0.98	0.35	0.87	2%
b Constrained growth	0.7	5.81	14.34	13%
c Unconstrained growth	0.3	12.39	30.61	27%

corridors for pronghorn (Poor et al., 2012) and sage-grouse (Tack et al., 2011). At state and provincial scales, efficiency of conservation for pipits would be maximized by focusing initial investments in southeast Alberta, southwest and south-central Saskatchewan, and northeast Montana (Fig. 2).

Our distribution model suggests that broad-scale climate patterns strongly influence pipit habitat selection (see also George et al., 1992; Wiens et al., 2008). Climate variables, especially those related to precipitation, were highly predictive and pipits selected an envelope of moderate moisture at a continental scale and in a non-linear fashion. Whether this moisture envelope produces vegetation structure that is relatively sparse or dense depends on geographic context as well as management (Bakker et al., 2002; Madden et al., 2000). This may explain why a regionally based model developed by Niemuth et al. (2008) did not report a relationship between climate and pipit abundance. Variability captured in our range-wide approach boosted power to detect climate relationships, and the random forest approach is well suited to characterize non-linear relationships. Our continental-scale analysis explains variation in local-scale studies by capturing the range of environmental conditions that shape populations.

Pipits are known to avoid exotic and planted grasses (Davis et al., 2013), but to the best of our knowledge no continental data exists for grassland composition and we were unable to include it in this analysis. Moisture and climate variables relevant to plant communities were included to capture some variability in herbaceous plant structure and composition. Although coarse land cover data limited our model's ability to discriminate fine scale ecological processes such as vegetation composition (second order; Johnson, 1980) or inform site level decision making, it helps us to understand broad scale (first order) habitat selection.

Analysis of soil capability for agriculture demonstrates that the distribution of pipits has contracted in response to cumulative impacts of tillage in arable grasslands. This pattern is supported by spatial variability in trend estimates in the Breeding Bird Survey (Fig. A4; Sauer et al., 2014). Current evidence suggests that pipits avoid cropland (Davis et al., 1999; Owens and Myres, 1973) and future research is needed to evaluate the contribution of individuals occurring in or around cropland to population growth (Donovan and Thompson, 2001; Pulliam, 1988). Despite avoidance, low predicted densities across

Table 3

Global and national distributions of Pipits across land ownership classes. Values derived from the proportion of the summed probability of occurrence layer produced by the Random Forest model in each class. Values shown as percentages.

	United States		Canada		Global total
	Global (%)	National (%)	Global (%)	National (%)	Total (%)
Private	27.6	68.2	42.4	71.4	70.0
Tribal/first nations	4.9	12.0	0.9	1.4	5.8
Federal	5.3	12.9	3.8	6.4	9.1
State/provincial	2.7	6.6	12.1	20.4	14.8
Other conservation	0.1	0.3	0.2	0.4	0.3

56.4 million hectares of cultivated land could represent up to 29% of the breeding population.

Unconstrained cropland growth predictions suggest that risk to the population is moderate and that potential losses are comparable at U.S. (27%) and continental (25%) scales. However, tillage of an additional 12.5 million hectares in the U.S. is unlikely and losses can be mediated through proactive and targeted action. Conservation of this species depends on a shared vision for sustainable ranching as 70% of pipits rely on privately owned grasslands, often maintained as rangelands for livestock production. Moreover, another 12% of the population breeds on provincial lands in Canada that are privately managed. Public and tribal lands support less than a third of populations, though tillage risk scenarios suggest that these are continentally important for insulating against increased cropland expansion.

Results presented here are specific to effects of cropland conversion on the breeding grounds and similar analyses for winter range would inform a more holistic strategy throughout the pipit life cycle. Next-generation analyses could also incorporate other potential risks such as climate change (Skagen and Yackel Adams, 2012) and energy development. Effects of energy infrastructure on pipit abundance are variable (Hamilton et al., 2011; Kalyn Bogard and Davis, 2014) but linear features and establishment of exotic grasses associated with oil and gas development may reduce reproductive success (Ludlow et al., 2015). An additional 50,000 new oil and gas wells are added annually in central North America (Allred et al., 2015) and if drilling continues as anticipated, a regional understanding of potential impacts to pipits is warranted.

5. Conclusion: a roadmap for pipit conservation

We show that conservation of pipits depends upon a systematic approach that invests heavily in private land partnerships. Identification of priority landscapes can enhance decision-making and promote immediate and effective conservation actions. Private landowners are willing to implement beneficial practices for wildlife (Henderson et al., 2014) and the capacity to do so is growing as coordinated approaches become available (Neudecker et al., 2011). Voluntary incentives can help offset high economic returns from cropland by compensating producers for the conservation value of native grasslands. Partnerships should work to develop a portfolio of incentives relevant to the diverse needs of landowners. Some examples include conservation easements (Fishburn et al., 2009), compensation for ecological goods and services, drought mitigation and marketing of livestock products raised on native grasslands. Acceleration of pipit conservation will likely require additional coordinated funding.

Improvements in agricultural policy that incentivize ranching would also curb tillage expansion. For example, the new 'Sodsaver' provision in the 2014 Farm Bill (U.S. Agricultural Act of 2014; H.R. 2642) denies full federal insurance subsidy to recently converted cropland (Miao et al., 2014). Additional modification of subsidies could further reduce conversion of marginal land as incentives still favor farming over ranching (GAO, 2007). Higher returns from cropland also entice policy makers to lease public lands for farming where permitted. For example, prohibiting tillage on state school-trust lands would remove a primary threat to grassland cores in Montana. Other policy incentives that generate and maintain interest in grassland conservation should also be considered. One approach would be to modify the U.S. Conservation Reserve Program allowing more frequent grazing, mirroring the Permanent Cover program in Canada (McMaster and Davis, 2001).

Acknowledgments

This work was supported by the U.S. Bureau of Land Management and the U.S. Fish and Wildlife Service Plains and Prairie Potholes Landscape Conservation Cooperative, the Prairie Pothole Joint Venture and the Habitat and Population Evaluation Team. We thank the large

group of forward-thinking collaborators that contributed survey data for this analysis. Survey data were obtained from: Alberta Fisheries and Wildlife Management Information System, the North American Breeding Bird Survey, Environment Canada and the Canadian Wildlife Service, Montana Natural Heritage Program and the University of Montana, Rocky Mountain Bird Observatory, and the University of Manitoba. Work in Manitoba was supported by Parks Canada, Natural

Sciences and Engineering Research Council of Canada, Clayton H. Riddell Endowment Fund, Manitoba Research and Innovations Fund, Canadian Foundation for Innovations and Manitoba Graduate Scholarship. Thanks to Mark Gilchrist, Robin Bloom, Stefane Fontaine, Trevor Reid and Elvira Roberge for their help with land tenure mapping in Canada. The views in this manuscript from USFWS authors are their own and do not necessarily represent the views of the USFWS.

Appendix A

Table A1

Sources and point-count methods for data used in model fitting (AB-FWMIS = Alberta Fisheries and Wildlife Management Information System, BBS = North American Breeding Bird Survey, CWS = Canadian Wildlife Service, EC-CWS = Environment Canada and the Canadian Wildlife Service, MTNHP-UMT = Montana Natural Heritage Program and the University of Montana, RMBO = Rocky Mountain Bird Observatory, UM = University of Manitoba).

Agency or institution	Number of records used	Point-count duration	Point-count distance	Reference
AB-FWMIS	2666	Various	Various	Unavailable
BBS	2235	3 min	400 m	Link and Sauer (1998)
CWS	1273	5 min	100 m	Kalyn Bogard and Davis (2014)
EC-CWS	30	5 min	250 m	Dale and Weins (submitted for publication)
MTNHP-UMT	2151	10 min	100 m	Hendricks et al. (2008)
RMBO	1564	5 min	Unlimited	Hanni et al. (2009)
UM	81	5 min	100 m	Ranellucci et al. (2012)

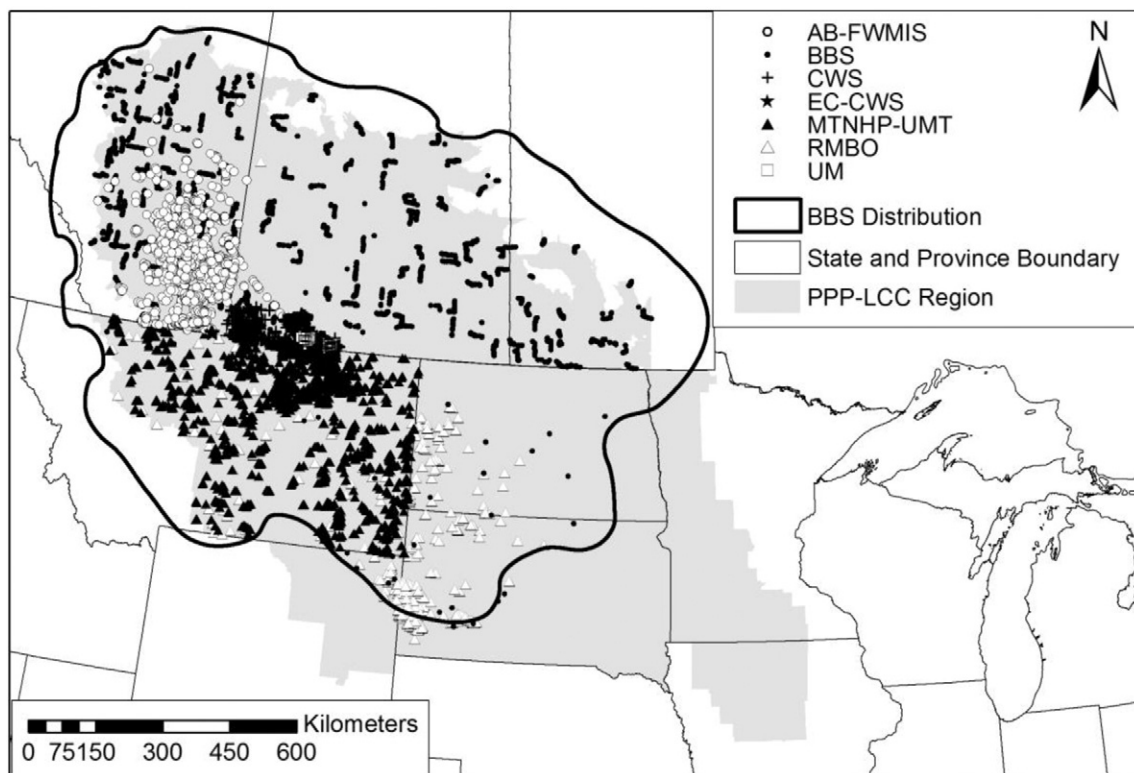


Fig. A1. Location and sources of data used in model fitting (AB-FWMIS = Alberta Fisheries and Wildlife Management Information System, BBS = North American Breeding Bird Survey, CWS = Canadian Wildlife Service, EC-CWS = Environment Canada and the Canadian Wildlife Service, MTNHP-UMT = Montana Natural Heritage Program and the University of Montana, RMBO = Rocky Mountain Bird Observatory, UM = University of Manitoba).

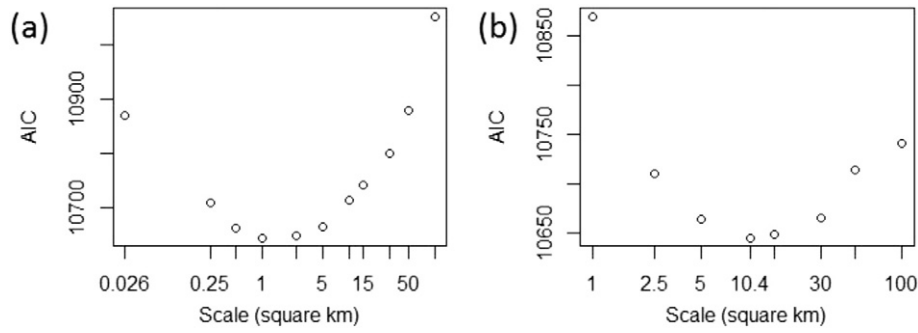


Fig. A2. Comparative strength of relationship between Sprague's Pipit occurrence and grassland proportion (a) or grassland aggregation (b) measured across spatial scales. Variables were calculated for rectangular neighborhoods surrounding survey locations using area indicated on the x-axis (log scale). Relationships estimated using binomial regression and compared using Akaike's Information Criterion (AIC; y-axis).

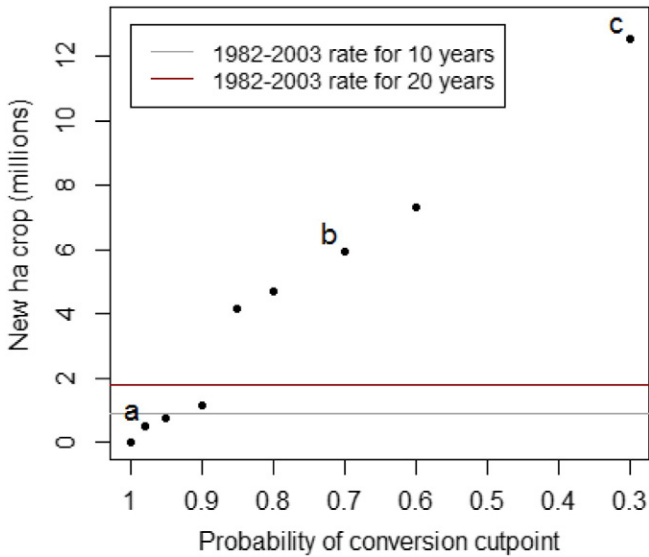


Fig. A3. Area accumulation plot for the U.S. portion of the study area, derived from tillage expansion model probabilities (Smith et al., in preparation). Background (0.98), constrained (0.7) and unconstrained (0.3) scenario cutpoints indicated by a, b and c respectively. Estimated 1982–2003 annual expansion rate of 0.635% (0.32–0.95%) taken from GAO (2007).

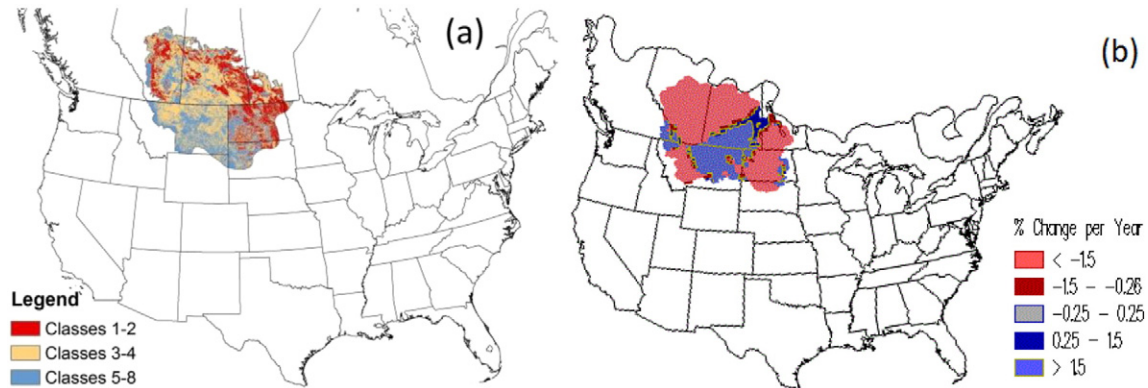


Fig. A4. Soil capability class for agriculture (a) and observed population trends for Sprague's Pipit (b; from Sauer et al., 2014) across the study area. Soil classes 1–2 are most arable, 3–4 have some limitations, and classes 5–8 are least arable.

References

Agriculture and Agri-Food Canada, 2015. Land cover for agricultural regions of Canada, circa 2010. <http://open.canada.ca/> (accessed June 2015).

Ahlering, M.A., Johnson, D.H., Faaborg, J., 2009. Factors associated with arrival densities of Grasshopper Sparrow (*Ammodramus savannarum*) and Baird's Sparrow (*A. bairdii*) in the upper Great Plains. *Auk* 126, 799–808.

Allred, B.W., Smith, W.K., Twidwell, D., Haggerty, J.H., Running, S.W., Naugle, D.E., Fuhlendorf, S.D., 2015. The loss of ecosystem services to accelerated oil and gas development in North America. *Science* 348, 401–402.

Bailey, R.G., 1995. Descriptions of the ecoregions of the United States. Miscellaneous Publication 1391. U.S. Department of Agriculture, Forest Service, Washington, D.C (108 pp.).

Bakker, K.K., Naugle, D.E., Higgins, K.F., 2002. Incorporating landscape attributes into models for migratory grassland bird conservation. *Conserv. Biol.* 16, 1638–1646.

Bottrill, M.C., Joseph, L.N., Carwardine, J., Bode, M., Cook, C., Game, E.T., Grantham, H., Kark, S., Linke, S., McDonald-Madden, E., Pressey, R.L., Walker, S., Wilson, K.A., Possingham, H.P., 2008. Is conservation triage just smart decision making? *Trends Ecol. Evol.* 23, 649–654.

Breiman, L., 2001. Random Forests. *Mach. Learn.* 45, 5–32.

Brennan, L.A., Kuvlesky, W.P., 2005. North American grassland birds: an unfolding conservation crisis? *J. Wildl. Manag.* 69, 1–13.

Canada Land Inventory, 1998. National Soil DataBase, Agriculture and Agri-Food Canada.

Copeland, H., Pocewicz, A., Naugle, D.E., Griffiths, T., Keinath, D.A., Evans, J.S., 2013. Measuring the effectiveness of conservation: a novel framework to quantify the benefits of sage-grouse conservation policy and easements in Wyoming. *PLoS ONE* 8, e67261.

Copeland, H., Sawyer, H., Monteith, K.L., Naugle, D.E., Pocewicz, A., 2014. Conserving migratory mule deer through the umbrella of sage-grouse. *Ecosphere* 5, 117.

Cutler, D.R., Edwards, T.C., Beard, K.H., Cutler, A., Hess, K.T., Gibson, J., Lawler, J.J., 2007. Random Forests for classification in ecology. *Ecology* 88, 2783–2792.

Dai, A., NCAR, 2014. National Center for Atmospheric Research. The Climate Data Guide: Palmer Drought Severity Index (PDSI) (<https://climatedataguide.ucar.edu/climate-data/palmer-drought-severity-index-pdsi>, accessed November 2012).

Dale, B.C., Weins, T.S., 2014. Grassland Bird Responses to Wetlands and Cattle Water Sources in Grazed Landscapes (Manuscript submitted for publication).

- Davis, S.K., Duncan, D.C., Skeel, M., 1999. Distribution and habitat associations of three endemic grassland songbirds in southern Saskatchewan. *Wilson Bull.* 111, 389–396.
- Davis, S.K., Brigham, R.M., Shaffer, T.L., James, P.C., 2006. Mixed-grass prairie passerines exhibit weak and variable responses to patch size. *Auk* 123, 807–821.
- Davis, S.K., Fisher, R.J., Skinner, S.L., Shaffer, T.L., Brigham, R.M., 2013. Songbird abundance in native and planted grassland varies with type and amount of grassland in the surrounding landscape. *J. Wildl. Manag.* 77, 908–919.
- Davis, S.K., Robbins, M.B., Dale, B.C., 2014. Sprague's Pipit (*Anthus spragueii*). The Birds of North America Online. In: Poole, A. (Ed.), Retrieved from the Birds of North America Online. Cornell Lab of Ornithology, Ithaca (<http://bna.birds.cornell.edu/bna/species/439>, accessed January 2015).
- Doherty, K., Tack, J.D., Evans, J.S., Naugle, D.E., 2010. Mapping breeding densities of greater sage-grouse: a tool for range-wide conservation planning. BLM Completion Report. Interagency Agreement # L 10 PG00911.
- Doherty, K.E., Ryba, A.J., Stemler, C.L., Niemuth, N.D., Meeks, W.A., 2013. Conservation planning in an era of change: state of the U.S. Prairie Pothole Region. *Wildl. Soc. Bull.* 37, 546–563.
- Donovan, T.M., Thompson, F.R., 2001. Modeling the ecological trap hypothesis: a habitat and demographic analysis for migrant songbirds. *Ecol. Appl.* 11, 871–882.
- Environment Canada, 2012. Amended Recovery Strategy for the Sprague's Pipit (*Anthus spragueii*) in Canada. Species at Risk Act Recovery Strategy Series. Environment Canada, Ottawa (vi + 44 pp.).
- ESA, 1973. US Endangered Species Act of 1973, as amended, Pub. L. No. 93–205, 87 Stat. 884 (Dec. 28, 1973) Available at: <http://www.fws.gov/endangered/esa-library/pdf/ESAail.pdf>.
- ESRI, 2010. ArcMap 10.0. Environmental Systems Resource Institute, Redlands, California.
- Evans, J.S., 2015. spatialEco: an R package for spatial analysis and modeling. R package version 0.1-1. <http://cran.r-project.org/package=spatialEco>.
- Evans, J.S., Murphy, M.A., 2014. rUtilities: an R package for model selection and validation of Random Forests. R package version 1.0-0. <http://CRAN.R-project.org/package=rUtilities>.
- Evans, J.S., Murphy, M.A., Holden, Z.A., Cushman, S.A., 2011. Modeling species distribution and change using Random Forests in predictive species and habitat modeling. In: Drew, C.A., Wiersman, Y.F., Huettmann, F. (Eds.), *Landscape ecology: concepts and applications*. Springer, NY.
- Fargione, J.E., Cooper, T.R., Flaspohler, D.J., Hill, J., Lehman, C., Tilman, D., McCoy, T., McLeod, S., Nelson, E.J., Oberhauser, K.S., 2009. Bioenergy and wildlife: threats and opportunities for grassland conservation. *Bioscience* 59, 767–777.
- Fawcett, T., 2006. An introduction to ROC analysis. *Pattern Recogn. Lett.* 27, 861–874.
- Fishburn, I.S., Kareiva, P., Gaston, K.J., Armsworth, P.R., 2009. The growth of easements as a conservation tool. *PLoS ONE* 4, e4996.
- Fisher, R.J., Davis, S.K., 2010. From Wiens to Robel: a review of grassland-bird habitat selection. *J. Wildl. Manag.* 74, 265–273.
- Fisher, R.J., Davis, S.K., 2011. Habitat use by Sprague's Piptits (*Anthus spragueii*) in native pastures and planted, non-native hay fields. *Auk* 128, 273–282.
- Foley, J.A., Ramankutty, N., Brauman, K.A., Cassidy, E.S., Gerber, J.S., Johnston, M., Mueller, N.D., O'Connell, C., Ray, D.K., West, P.C., Balzer, C., Bennett, E.M., Carpenter, S.R., Hill, J., Monfreda, C., Polasky, S., Rockström, J., Sheehan, J., Siebert, S., Tilman, D., Zaks, D.P.M., 2011. Solutions for a cultivated planet. *Nature* 478, 337–342.
- GAO, 2007. Agricultural Conservation Farm Program Payments are an Important Factor in Landowners' Decisions to Convert Grassland to Cropland. United States Government Accountability Office Report 07–1054. Washington, D.C.
- George, T.L., Fowler, A.C., Knight, R.L., McEwen, L.C., 1992. Impacts of a severe drought on grassland birds in western North Dakota. *Ecol. Appl.* 2, 275–284.
- Hamilton, L.E., Dale, B.C., Paszkowski, C.A., 2011. Effects of disturbance associated with natural gas extraction on the occurrence of three grassland songbirds. *Avian Conserv. Ecol.* 6.
- Hanni, D.J., White, C.M., Blakesley, J.A., Levandoski, G.J., Birek, J.J., 2009. Point Transect Protocol. Unpublished report. Rocky Mountain Bird Observatory, Brighton, CO. 37 pp.
- Hastie, T., Tibshirani, R., Friedman, J., 2008. *The Elements of Statistical Learning*. Second edition. Springer-Verlag.
- Henderson, A.E., Reed, M., Davis, S.K., 2014. Voluntary stewardship and the Canadian Species at Risk Act: exploring rancher willingness to support species at risk in the Canadian prairies. *Hum. Dimens. Wildl.* 19, 17–32.
- Hendricks, P., Lenard, S., Currier, C., Maxwell, B., Carlson, J., 2008. Surveys for Grassland Birds of the Malta Field Office – BLM, Including a Seven-year Study in North Valley County. Montana Natural Heritage Program, Helena, MT.
- Hoekstra, J.M., Boucher, T.M., Ricketts, T.H., Roberts, C., 2004. Confronting a biome crisis: global disparities of habitat loss and protection. *Ecol. Lett.* 8, 23–29.
- Homer, C.G., Dewitz, J.A., Yang, L., Jin, S., Danielson, P., Xian, G., Coulston, J., Herold, N.D., Wickham, J.D., Megown, K., 2015. Completion of the 2011 National Land Cover Database for the conterminous United States—Representing a decade of land cover change information. *Photogramm. Eng. Remote Sens.* 81, 345–354.
- IUCN, 2014. The IUCN Red List of Threatened Species. Version 2014.3. <http://www.iucnredlist.org> (accessed November 2014).
- Jiménez-Valverde, A., Barve, N., Lira-Noriega, A., Maher, S.P., Nakazawa, Y., Papeš, M., Soberón, J., Sukumaran, J., Peterson, A.T., 2011. Dominant climate influences on North American bird distributions. *Glob. Ecol. Biogeogr.* 20, 114–118.
- Johnson, D.H., 1980. The comparison of usage and availability measurements for evaluating resource preference. *Ecology* 61, 65–71.
- Kalyn Bogard, H.J., Davis, S.K., 2014. Grassland songbirds exhibit variable responses to the proximity and density of natural gas wells. *J. Wildl. Manag.* 78, 471–482.
- Liaw, A., Wiener, M., 2002. Classification and regression by randomForest. *R News* 2, 18–22.
- Link, W.A., Sauer, J.R., 1998. Estimating population change from count data: application to the North American breeding bird survey. *Ecol. Appl.* 8, 258–268.
- Ludlow, S.M., Brigham, R.M., Davis, S.K., 2015. Oil and natural gas development has mixed effects on the density and reproductive success of grassland songbirds. *Condor* 117, 64–75.
- Madden, E.M., Murphy, R.K., Hansen, A.J., Murray, L., 2000. Models for guiding management of prairie bird habitat in northwestern North Dakota. *Am. Midl. Nat.* 144, 377–392.
- Margules, C.R., Pressey, R.L., 2000. Systematic conservation planning. *Nature* 405, 243–253.
- McGarigal, K., Cushman, S.A., Ene, E., 2012. FRAGSTATS v4: Spatial Pattern Analysis Program for Categorical and Continuous Maps. Computer Software Program Produced by the Authors at the University of Massachusetts, Amherst.
- McKenney, D.W., Hutchinson, M.F., Kesteven, J.L., Venier, L.A., 2001. Canada's plant hardiness zones revisited using modern climate interpolation techniques. *Can. J. Plant Sci.* 81, 129–143.
- McMaster, D.G., Davis, S.K., 2001. An evaluation of Canada's Permanent Cover Program: habitat for grassland birds? *J. Field Ornithol.* 72, 195–210.
- Metz, C.E., 1978. Basic principles of ROC analysis. *Semin. Nucl. Med.* 8, 283–298.
- Miao, R., Hennessy, D.A., Feng, H., 2014. Sodbusting, crop insurance, and sunk conversion costs. *Land Econ.* 90, 601–622.
- Millard, M.J., Czarnecki, C.A., Morton, J.M., Brandt, L.A., Briggs, J.S., Shipley, F.S., Sayre, R., Sponholtz, P.J., Perkins, D., Simpkins, D.G., Taylor, J., 2012. A national geographic framework for guiding conservation on a landscape scale. *J. Fish Wildl. Manag.* 3, 175–183.
- Murphy, M.A., Evans, J.S., Storfer, A., 2010. Quantifying *Bufo boreas* connectivity in Yellowstone National park with landscape genetics. *Ecology* 91, 252–261.
- NASA, 2012. National Aeronautics and Space Administration, Earth Observations Data Portal. <http://neo.sci.gsfc.nasa.gov/> (accessed November 2012).
- National Operational Hydrologic Remote Sensing Center, 2004. Snow Data Assimilation System (SNODAS) Data Products at NSIDC. National Snow and Ice Data Center, Boulder, Colorado USA <http://dx.doi.org/10.7265/N5TB14TC> (accessed November 2012).
- Neudecker, G.A., Duvall, A.L., Stutzman, J.W., 2011. Community-based landscape conservation: a roadmap for the future. In: Naugle, D.E. (Ed.), *Energy Development and Wildlife Conservation in Western North America*. Island Press, Washington, D. C.
- Niemuth, N.D., Solberg, J.W., Shaffer, T.L., 2008. Influence of moisture on density and distribution of grassland birds in North Dakota. *Condor* 110, 211–222.
- NRCS, 2014. Natural Resources Conservation Service Soil Survey Staff, United States Department of Agriculture. Web Soil Survey. Available online at, <http://websoilsurvey.nrcs.usda.gov/> (Accessed April, 2014).
- Owens, R.A., Myres, M.T., 1973. Effects of agriculture upon populations of native passerine birds of an Alberta fescue grassland. *Can. J. Zool.* 51, 697–713.
- Poor, E.E., Loucks, C., Jakes, A., Urban, D.L., 2012. Comparing habitat suitability and connectivity modeling methods for conserving pronghorn migrations. *PLoS ONE* 7, e49390.
- Pulliam, H.R., 1988. Sources, sinks, and population regulation. *Am. Nat.* 132, 652–661.
- R Development Core Team, 2013. R: A language and environment for statistical computing. R Development Core Team. R Foundation for Statistical Computing, Vienna, Austria.
- Ranellucci, C., Koper, N., Henderson, D.C., 2012. Twice-over rotational grazing and its impacts on grassland songbird abundance and habitat structure. *Rangel. Ecol. Manag.* 65, 109–118.
- Ray, D.K., Mueller, N.D., West, P.C., Foley, J.A., 2013. Yield trends are insufficient to double global crop production by 2050. *PLoS ONE* 8, e66428.
- Reeves, M.C., Zhao, M., Running, S.W., 2006. Applying improved estimates of MODIS productivity to characterize grassland vegetation dynamics. *Rangel. Ecol. Manag.* 59, 1–10.
- Rehfeldt, G.E., 2006. A spline climate model for western United States. USDA Forest Service Rocky Mountain Research Station General Technical Report, Fort Collins, CO. 165.
- Samson, F.B., Knopf, F.L., Ostlie, W., 2004. Great Plains ecosystems: past, present and future. *Wildl. Soc. Bull.* 32, 6–15.
- Sanderson, E.W., Redford, K.H., Vedder, A., Coppolillo, P., Ward, S.E., 2002. A conceptual model for conservation planning based on landscape species requirements. *Landsc. Urban Plan.* 58, 41–56.
- Sauer, J.R., Hines, J.E., Fallon, J.E., Pardieck, K.L., Ziolkowski, D.J.J., Link, W.A., 2014. The North American Breeding Bird Survey, Results and Analysis 1966–2013. Version 01.30.2015. USGS Patuxent Wildlife Research Center, Laurel, MD.
- Schneider, R.R., Hauer, G., Adamowicz, W.L., Boutin, S., 2010. Triage for conserving populations of threatened species: the case of the woodland caribou in Alberta. *Biol. Conserv.* 143, 1603–1611.
- Skagen, S.K., Yackel Adams, A.A., 2012. Weather effects on avian breeding performance and implications of climate change. *Ecol. Appl.* 22, 1131–1145.
- Sliwinski, M.S., Koper, N., 2012. Grassland bird responses to three edge types in a fragmented mixed-grass prairie. *Avian Conserv. Ecol.* 7.
- Smith, J.T., Evans, J.S., Baruch-Mordo, S., Kiesecker, J.M., Naugle, D.E., 2015n. Reducing Cropland Conversion Risk to Sage-grouse Through Strategic Conservation of Working Rangelands (Manuscript in preparation).
- Tack, J.D., Naugle, D.E., Carlson, J.C., Fargery, P.J., 2011. Greater sage-grouse *Centrocercus urophasianus* migration links the USA and Canada: a biological basis for international prairie conservation. *Oryx* 46, 64–68.
- Thomas, C.D., 2010. Climate, climate change and range boundaries. *Divers. Distrib.* 16, 488–495.
- USDA, 2012. Forest Service Rocky Mountain Research Station, Moscow Forestry Sciences Laboratory. <http://forest.moscowfsi.wsu.edu/climate/> (accessed Nov. 2012).
- USFWS, 2010. News release: listing of Sprague's Pipit under ESA found warranted but precluded. <http://www.fws.gov/mountain-prairie/species/birds/spraguespipit/PressRelease09142010.pdf> (Accessed October 2011).

- USFWS, 2013. Greater Sage-grouse (*Centrocercus urophasianus*) Conservation Objectives: Final Report ed. U.S.F.a.W. Service, Denver, CO.
- Walker, J., Rotella, J.J., Loesch, C.R., Renner, R.W., Ringelman, J.K., Lindberg, M.S., Dell, R., Doherty, K.E., 2013. An integrated strategy for grassland easement acquisition in the Prairie Pothole Region, USA. *J. Fish Wildl. Manag.* 4, 267–279.
- Wickham, J.D., Stehman, S.V., Fry, J.A., Smith, J.H., Homer, C.G., 2010. Thematic accuracy of the NLCD 2001 land cover for the conterminous United States. *Remote Sens. Environ.* 114, 1286–1296.
- Wickham, J.D., Stehman, S.V., Gass, L., Dewitz, J., Fry, J.A., Wade, T.G., 2013. Accuracy assessment of NLCD 2006 land cover and impervious surface. *Remote Sens. Environ.* 130, 294–304.
- Wiens, T.S., Dale, B.C., Boyce, M.S., Kershaw, G.P., 2008. Three way k-fold cross-validation of resource selection functions. *Ecol. Model.* 212, 244–255.
- Willmott, C.J., 1981. On the validation of models. *Phys. Geogr.* 2, 184–194.
- Wright, C.K., Wimberly, M.C., 2013. Recent land use change in the Western Corn Belt threatens grasslands and wetlands. *Proc. Natl. Acad. Sci.* 110, 4134–4139.